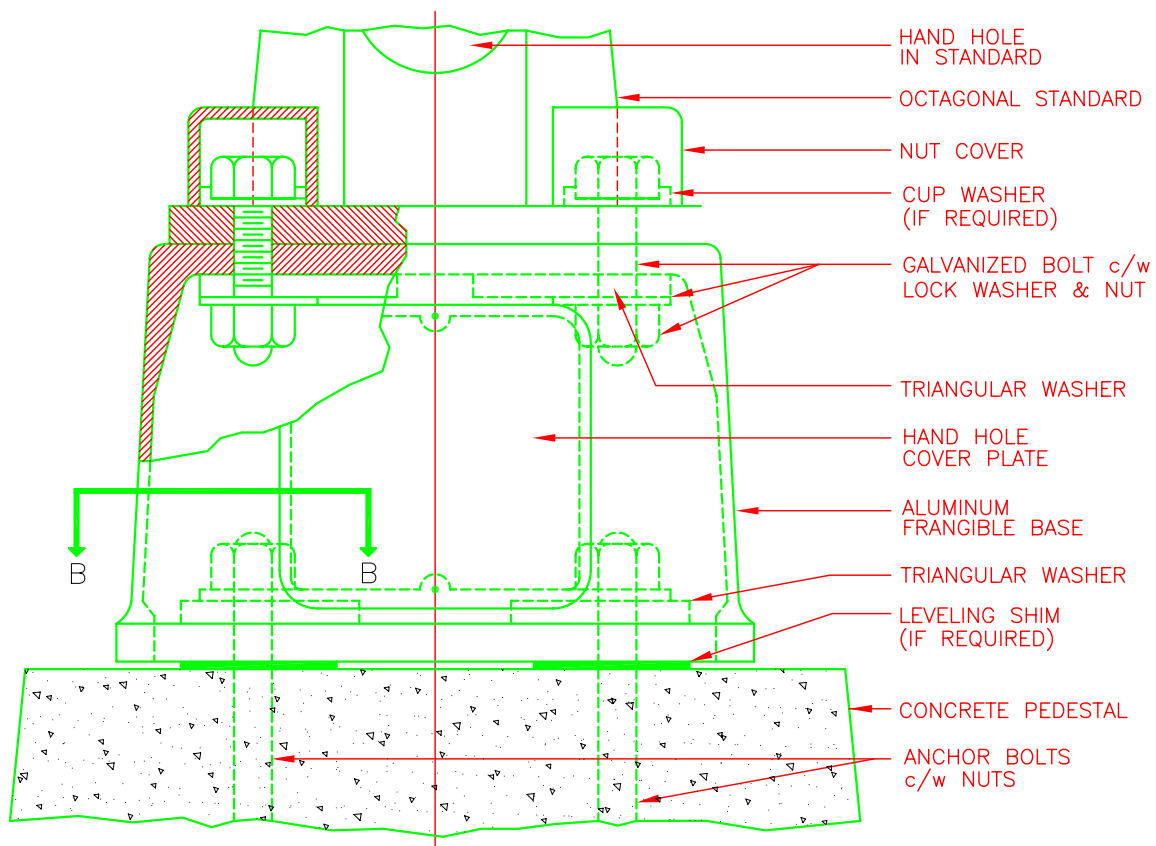


SECTION B-B



NOTES:

1. USE LUBRIPLATE OR OTHER SUITABLE GREASE ON ALL THREADS.

**FRANGIBLE BASE
DETAILS**

2	City	Drawings revised	02/99			
1	Usi	Original drawings created	04/96	Date: February 12/99	Scale: N.T.S	Dwg. No. G-7
No.	By	Revisions	Date	Drawn by: Bob Smith	Cad file: c:\..\drawings\standard\By_G7	